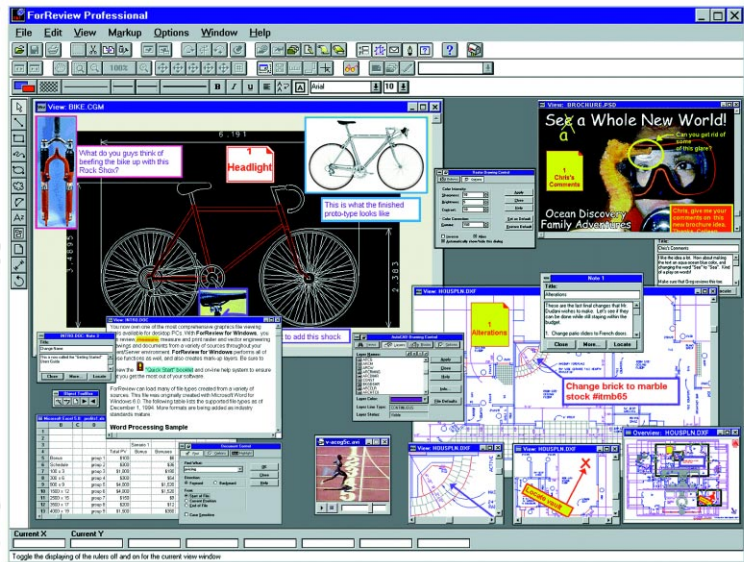




ForReview for Windows

ForReview™ for Windows by Allegria Software, Inc. is truly the one solution that will fulfill *all* your view and mark-up needs. Its features, versatility and integration capabilities are second to none, making it the most demanded and trusted view and mark-up product available today. The **ForReview** family runs on Windows 3.1, 95, 98 and Windows NT.

- **Lite™** is the perfect choice for streamlining your paperless environment, providing excellent view and mark-up capabilities for all raster type formats. With a wide range of tools, options and file formats that other products simply cannot match, **Lite** is the ideal solution for both the corporate and home users that would like to view a variety of pictures and images without having the originating application. **Lite** is Internet ready, and seamlessly integrates with your existing e-mail, fax and web browser applications, allowing you to electronically send and receive images across the office, or around the world! A **ForReview Office** version is available that additionally supports office documents and PDF files.
- **ForReview Professional™** is the Rolls Royce of view and mark-up products, combining all the features of the **Lite** edition, then adding the capability to view, redline and print office type documents and complex CAD and vector based drawings. **Professional** supports more than 200 drawing, image and document formats that are commonly used in PC, UNIX, Internet and Intranet environments. **Professional** allows you to access and utilize the intelligence of native CAD and CGM formats, providing far more capabilities than other products available in today's market.
- **ForReview Web Plug-In™** is the ideal solution for global document sharing. The **Web Plug-In** allows you to intelligently view and print single or multi-page/layer documents and their markup files on any web browser. These documents can be explored in detail with simple right-click functions including: zoom, pan, flip/rotate, etc. and printed in both portrait or landscape modes.



Though **ForReview** family members can run stand-alone, extensive API (Application Programming Interface) capabilities within **ForReview** promote seamless integration into data management systems and other corporate applications. For the integrations, a middleware module is developed that connects the EDM/PDM to **ForReview** through **ForReview's** rich API. An integrated version of **ForReview** will check drawings in and out of your EDM/PDM for you, and keep track of any associated mark-up file/s. **ForReview** integrations are so popular, that numerous "out-of-the-box" integrations already exist. These existing integrations are with Matrix-One's *Matrix*, DOCUMENTUM's *WorkSpace*, SDRC's *Metaphase*, Autodesk's *WorkCenter*, PC DOCS' *DOCS Open*, FileNet's *WorkFlo Business System (WAL)* and Computervision's *Optegra* to name a few, with a continuous pipeline of new integrations being developed on an on going basis.

Look at Everything You Can Do with ForReview!

Viewing

- Automatic filetype detection
- Automatic tagging of views or pages that contain mark-ups
- Compare two raster images
- Intelligently render files using specific Drawing Controls for each file type
- Obtain file information from file header
- Overlay any vector and raster file combination
- Pan, zoom, flip and rotate images
- Navigate images using overview windows and dynamically linked shadow boxes
- Save overlaid files as hybrid files
- Save screen content as a raster image
- Simultaneously view drawings in multiple windows at different scale factors
- Set foreground and background colors
- Tile or cascade drawings
- Toggle crosshairs, grids, rulers and scrollbars

Mark-up

- Add drawings, documents, audio (.wav) and video (.avi) files as "hot links" to note objects
- Annotate drawings with lines, polylines, squares, rectangles, polygons, clouds, circles, ellipses, curves, WYSIWYG text, Post-it® style note objects and raster pictures
- Draw using multiple colors, line styles, line weights, fills, and end caps
- Manage mark-up by layers or files
- Move, size, rotate or edit any mark-up object
- Transfer objects between layers/files
- Use TrueType™ font for text objects
- Use an unlimited number of mark-up layers and files

Rulers and Measurements

- Calibrate drawings based on any known distances
- Configure grids by exact size, ruler tick mark, count, or percentage
- Create user-defined rulers and measurement units
- Customize numerical display format (1 ft 6 in, 1.5 ft, 18 in, etc.) and (1.2, 1.23, etc.)
- Display current X & Y coordinate locations
- Measure area and perimeter of simple objects
- Measure lines and angles on any drawing
- Status info for current X, Y and geometrical parameters of selected object
- Use any number of predefined units and rulers: feet, inches, meters, millimeters, pixels, virtual device coordinates (vdc), or percentages

Printing

- Print complete drawings, documents or selected regions of data
- Print using lists (multiple drawings and documents in a single step)
- Print multiple images on the same sheet
- Print attached note object content data (separately or appended)
- Watermarking capabilities

Graphical User Interface

- Add custom icons and menu items for seamless integration
- Access context-sensitive help at any time
- Configure the menu system, toolbars, palettes, accelerators and application layout in any way
- Extensive On-line Help System
- Handle "what-if" scenarios through pinnable dialog boxes
- Navigate functionality quickly using intuitive icons and button tips
- Select from convenient, predefined configurations
- Transfer image data to other Windows applications using standard clipboard operations
- "Quick Help" for menu items and tool buttons

Application Programming Interface (API)

- Automate and integrate through DDE, DLL, or command scripts (ASCII macros) using over 100 commands
- Obtain real client-server results by registering 3rd party functionality with ForReview events
- Setup, customize or lockout any functionality
- Special "C" language API's that have the ability to return values
- Quickly integrate by using included samples

Internet Support

- Create lists of files with Internet addresses to view/print together
- Directly access Allegria's Web home and support page
- Directly load a drawing or document from an Internet address (URL)
- "Hot link" note objects to drawings, documents, audio or video files located on the Internet
- Use your favorite Web browser to use ForReview as your "helper application" to load drawings or documents automatically

File Format Support

ForReview supports over 200 raster, vector and office document formats

Raster Formats

Adobe Photoshop (PSD)
Amiga IFF (IFF)
Brooktrout (BROOKT)
CCITT Group 3 (G3)
CCITT Group 4 (G4)
CompuServe Graphics Exchange Format (GIF)
Encapsulated PostScript - Raster Only (EPS)
Fax Bitmaps in CCITT Group 3 Format (FAX)
Formtek (IMG)
GEM Bitmap Format (IMG)
Halo Cut (CUT)
IBM G3, G4, and mmr (IOCA)
Joint Photographics Experts Group (JPEG)
Kodak Photo CD (PCD)
Kofax (KOFAX)
LaserData LaserView (LASERV)
Macintosh Picture Format - Raster Only (PICT)
MacPaint (MACPNT)
Microsoft Windows 3.1 Icon (ICO)
Microsoft Windows Bitmap (BMP)
Microsoft Windows Clipboard (CLIP)
Microsoft Windows Device Independent Bitmap (DIB)
Microsoft Paint (MSPNT)

MIL-R-28002A, Type 1 (CALS)
Publishers Paintbrush (PCX, DCX)
Showpartner (GX2)
SunRaster (SUNRAS)
Tagged Image File Format (TIFF)
True Vision Targa (TARGA)
WordPerfect Metafile Format - Raster Only (WPG)
X Windows Bitmap (XBITM)
X Windows Dump (XWD)
X Windows Pixmap (PIXMAP)

Office Document Formats

Database:
dBASE for Windows (DBASE) - Versions thru 4.0
Microsoft Access (ACCESS) - Versions 1.0, 1.1 and 2.0
Paradox for Windows (PARADX) - Versions thru 1.0

Spreadsheets:

Lotus 1-2-3 (LOT123) - Versions thru 4.0
Microsoft Excel - (EXCEL) - Versions thru 5.0
Quatro Pro for Windows (QUATRO) - Versions thru 6.0

Word Processing:

Ami/AMI Professional (AMIPRO) - Versions thru 3.0
ASCII Text (TEXT)
Microsoft Rich Text Format (RTF) - Versions thru 2.0
Microsoft Windows Write (WINWRI) - Versions thru 3.0
Microsoft Word for Windows (WORD) - Versions thru 6.0
WordPerfect for Windows (WRDPER) - Versions thru 6.0

Vector Formats

AutoCAD (DWG, DXF) - Versions thru R13
Calcomp Plotter Language (CLP)
Computer Graphics Metafile (CGM) - Version 1.0
Hewlett-Packard Graphics Language (HPGL, HPGL/2)
MicroStation (DGN) - Versions through MicroStation 95
Microsoft Windows Metafile (WMF)

Other Formats

Acrobat Portable Document Exchange Format (PDF)
Hexadecimal File Dump (HEX)
Hybrid (GTX, Softdesk, ForReview)
Hypertext Markup Language (HTML)
PKWARE's PKZIP (ZIP) - Versions thru 2.04g
PowerPoint (PPT)

Did We Attract Your Attention?

Of course we did! If you need more information about our products, please contact us.
We will solve all of your enterprise-wide requirements - because we can!

GTS-GRAL, Inc.

Providing Enterprise-Wide Solutions

21076 Bake Parkway, Suite 100 • Lake Forest, CA 92630
(United States) Phone: (949) 462-7115 • Fax: (949) 462-7119
(International) Phone: 011-49-6151-9788-0 • Fax: 011-49-6151-9788-33
www.gtsgral.com • info@gtsgral.com